

Neale Howells
—*American Mama Gun Run*

John Martin Gallery · London

EDWARD CUTLER GALLERY · MILANO

Neale Howells
—*American Mama Gun Run*

John Martin Gallery, London 3 - 25 February

Edward Cutler Gallery, Milano 9 Febbraio - 4 Marzo

John Martin Gallery

38 Albemarle Street
London W1S 4JG
+44 (0)20 7499 1314
www.jmlondon.com

Edward Cutler Gallery

Via dell'Orso 12
20121 Milano
+39 02 3983 1032
www.edwardcutler.com



Artists have to start with high expectations...i always wanted my paintings to give you the same excitement as going to the cinema ... i want to make paintings that grab your attention from the start... I make big works so that when you walk up to them overwhelm your eyes engulfing you in art...it is a lot harder these days to do work like that... the paintings just take longer but you also ask more from them... you want to surprise yourself as you work and know the way you are working will have a positive ending. It seems to come through the detail... the large swathes of paint mean nothing if you cant find what a painting is about...so the smallest part becomes the most important. You have to believe in the work through every part of it so the identity runs through every line like dna. As I paint I usually obliterate the starting point, but it doesn't mean that the starting point isn't important..many began with the comics, slogans and advertising lines from america in the 1950s and those ideas and the feel of those times stay with the painting all the way through its unpredictable journey ... how do you know when you arrive? ... perhaps the truth is that a painting is never finished just abandoned...or completed by the person who takes the trouble to look at them.

NH

Gli artisti devono iniziare i loro lavori con grandi aspettative – ho sempre voluto che i miei quadri regalassero le stesse emozioni del cinema e poter realizzare dei dipinti che fossero in grado di attirare immediatamente l'attenzione dello spettatore. È per questo che faccio grandi opere, che da vicino hanno il potere di sopraffare chi le guarda, quasi inghiottendoli. Oggi è molto più difficile fare un lavoro di questo tipo... creare dipinti del genere prende molto tempo. E non solo, ai miei quadri chiedo molto di più, voglio che mi sorprendano mentre li sto creando ed avere la certezza di aver presto la giusta direzione. I grandi spruzzi di vernice non significano nulla se non riesci a capire ciò che voglia dire un dipinto nella sua interezza... è per questo che anche la più piccola parte diventa la più importante. Un dipinto si deve creare curando ogni piccolo dettaglio, solo in questo modo la sua essenza trasparirà da ogni macchia come il DNA. Mentre creo un quadro di solito cancello le prime pennellate dipingendoci sopra, ma non significa che il punto di partenza non sia importante. Molti lavori prendono ispirazione da fumetti, slogan e frasi tratte dalla pubblicità americane degli anni '50 e queste idee e la sensazione di quei tempi restano nel dipinto durante tutto il suo imprevedibile viaggio... Come fai a sapere quando sei arrivato? Forse la verità è che un dipinto non è mai finito ma solo abbandonato, o completato dalla persona che si prende la briga di osservarlo.

NH



PREVIOUS PAGE

first baby born in space, 2011

acrylic, oil, pastel and pencil on wood

226 x 151 cm, 89 x 59 ins



mama with a gun, 2011
acrylic, oil, pastel and pencil on wood
238 x 300 cms, 94 x 118 ins



real plastic girl
acrylic, oil, pastel and pencil on wood
168 x 107 cms, 66 x 42 ins



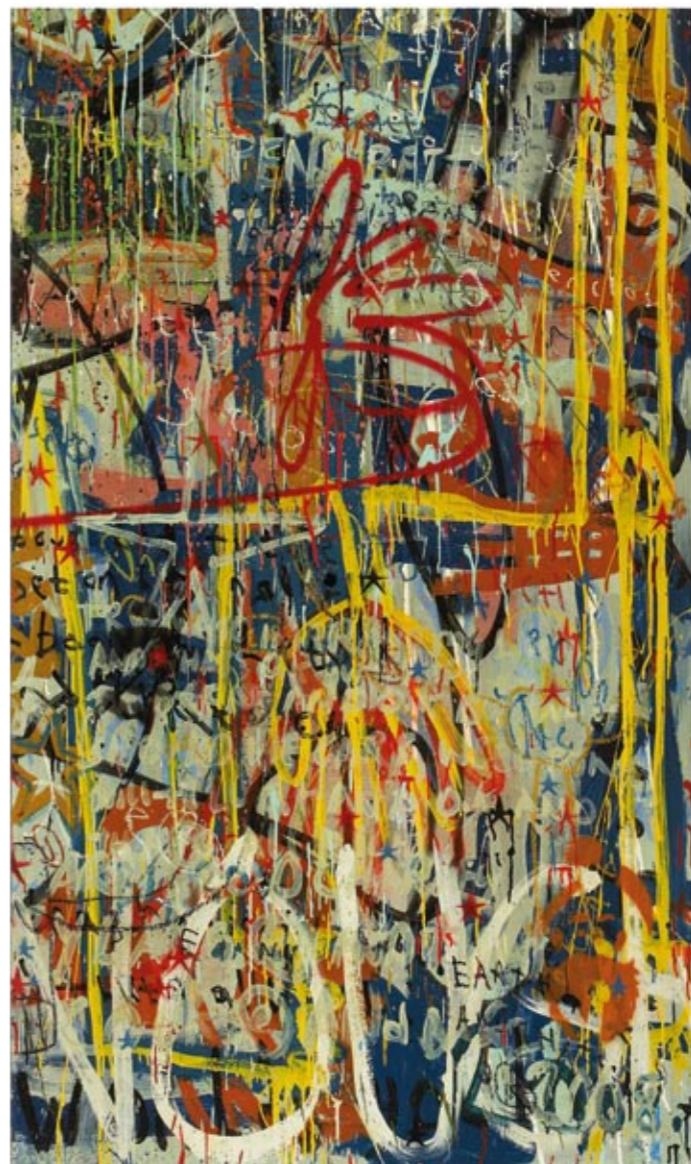
reverend hamster, 2010
acrylic, oil, pastel and pencil on wood
144 x 117 cms, 56 x 46 ins



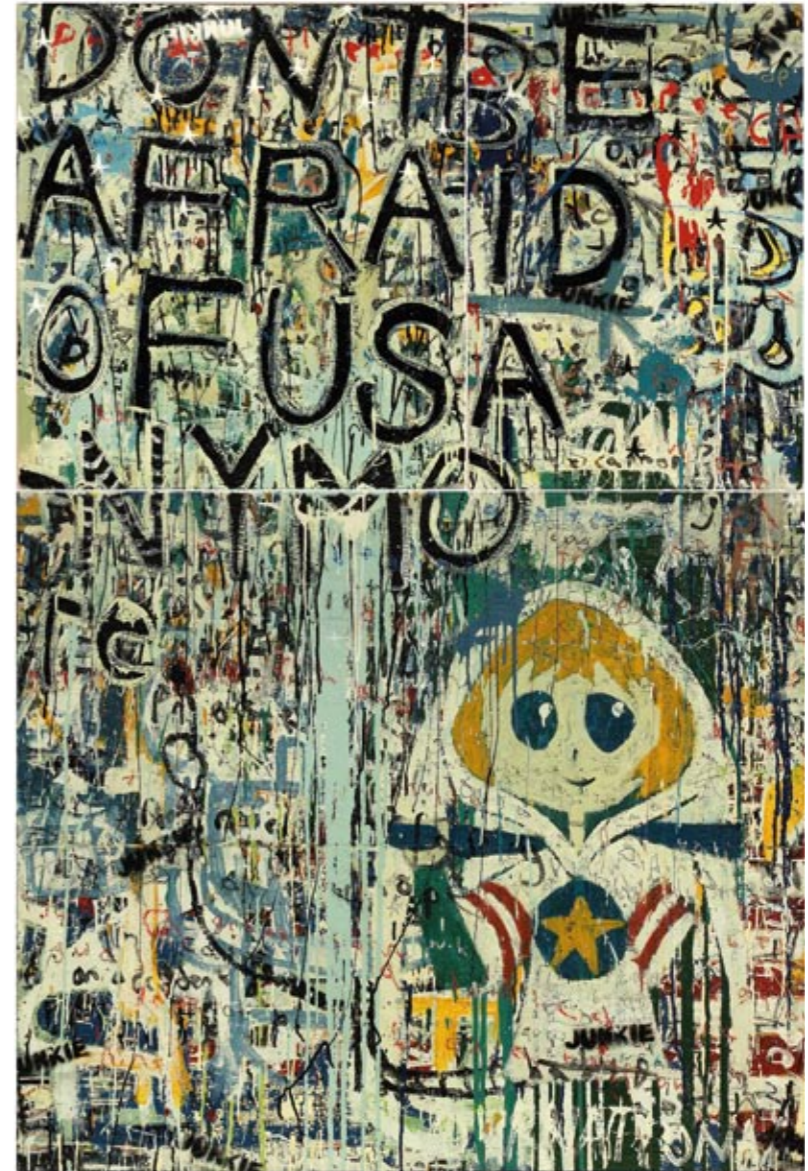
captain america vs the rest of the world, 2011
acrylic, oil, pastel and pencil on wood
175 x 490 cms, 69 x 192 ins



pacman we trust
acrylic, oil, pastel and pencil on wood
108 cms, 42 ins diametre



nous, 2009
acrylic, oil, pastel and pencil on wood
150 x 100 cms, 59 x 39 ins



don't be afraid, 2011
acrylic, oil, pastel and pencil on wood
199 x 130 cms, 78 x 51 ins



red band head, 2011
acrylic, oil, pastel and pencil on wood
47 x 47 cms, 18 x 18 ins

Neale Howells
b.1965

Solo Exhibition

- 2012 American Mama Gun Run Part 1, John Martin Gallery London
American Mama Gun Run Part 2, Edward Cutler Gallery, Milan
- 2008 Magic Book, John Martin Gallery, London
- 2008 Bad company may need positive advertising, Mission Gallery, Swansea
- 2005 John Martin Chelsea, London
- 2003 Phoenix Gallery, Brighton
Washington Gallery Penarth, South Wales
- 2002 Ormeau Baths Gallery Belfast, Washington Gallery Penarth
Millennium Plaza Cardiff, Washington Gallery, Penarth, South Wales
- 2001 Studio Voltaire Gallery London
- 2000 Tabernacle Machynlleth, Washington Gallery Penarth, South Wales
- 1999 Washington Gallery Penarth, South Wales
- 1998 Recent Work, Washington Gallery, Penarth, South Wales
Liverpool film festival
- 1997 'Berlin Works' Swansea Arts Workshop, Swansea
'Works 94-95', Pontardawe Arts Centre, Pontardawe
- 1996 'The Wall', Neath Museum, Neath

Group Exhibition

- 2011 Art Athina, John Martin Gallery, Greece
Arte Fiera, John Martin Gallery, Bologna
- 2010 Neale Howells and Noe Babel, Square 1 Art, West Sussex
- 2009 Storylines, John Martin Gallery, London
- 2003 Phoenix Gallery, Brighton
- 2002 Fresh 3 Chapter Arts Centre, Cardiff
- 2001 Ormeau Baths Gallery, Belfast
- 2000 Purchase Prize Pontypridd
National Eisteddfod, Llanelli
Tabernacle Machynlleth, Welsh Group / Pencil Power
Unterland Ausstellung, Germany
Battersea Art Fair, London
- 1999 Reading Images', St Davids Hall, Cardiff
- 1998 Purchase Prize, University of Glamorgan
National Eisteddfod, Bridgend
Black and White, Y-Tabernacl, Wales
- 1997 9th Mostyn Open, Llandudno, North Wales
Young Wales 4, Royal Cambrian Academy, North Wales
- 1996 National Eisteddfod of Wales, Bala
- 1995 National Eisteddfod of Wales, Conway

Public Collections/Commissions

- 2002~Millenium Plaza, Cardiff Studio on-site
- 2001~Sony Head Office, London
- ~Red Dragon Radio, Cardiff
- ~Know Your Enemy album cover for The Manic Street Preachers
- 1995~Black & White, Grand Theatre Swansea, Y- Tabernacl, Wales